

# eXTRASLIT

## The Fully Electric Compact Slitter Rewinder for Converting Films

Packaging films » Metallized films and others  
BOPP, CPP, OPP, BOPET, OPET, PET, BOPA, BOPLA, PE, PVC

Flexible packaging materials



CUTTING EDGE  
TECHNOLOGY

**LAEM**  **IMS**  
A BRAND OF IMSTECHNOLOGIES

**170**  
1851  
2021  
PIONEERING  
YEARS

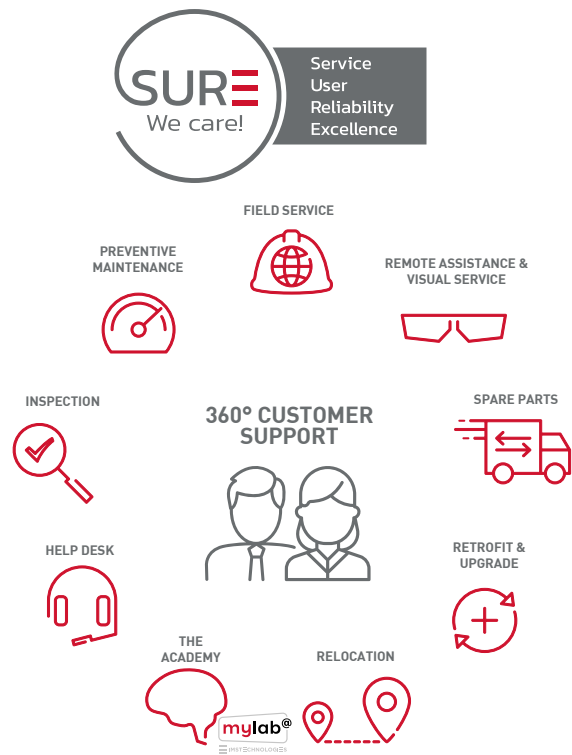
## 360° Service Philosophy

Choose technology and expertise from IMS TECHNOLOGIES, with more than 14,000 machines installed around the world.

Ask about our solutions for efficiency, quality and profitability in film converting.

IMS TECHNOLOGIES engineers are always available to promptly provide worldwide support in multiple languages by remote assistance or with fast on-site service.

An efficient stock management system allows us to supply spare parts worldwide with reduced delivery times.



## Industry 4.0

MAIA is the application that IMS TECHNOLOGIES makes available to its customers to increase efficiency and competitiveness in the Industry 4.0 era.

By collecting data and parameters from the machines and then processing them on the IOT Cloud platform MAIA, the performance of the machines themselves can be improved and the management of the entire production cycle and maintenance optimized.



### Benefits:

- » Customized interaction
- » Data security
- » Unlimited data management
- » Flexibility
- » Analytics
- » Collaboration
- » Access anywhere, anytime

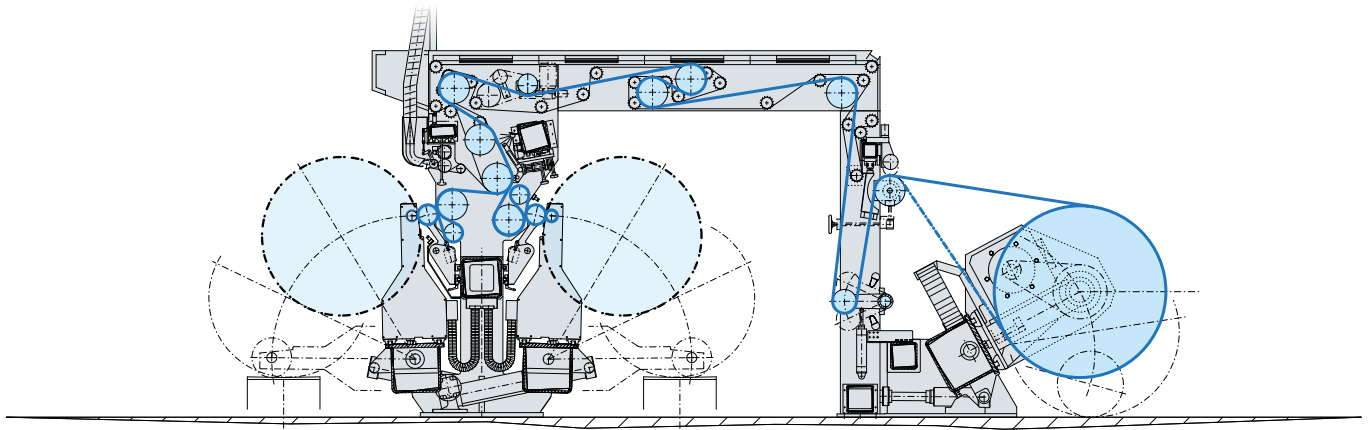


# eXTRASLIT

## THE FULLY ELECTRICAL COMPACT SLITTER REWINDER FOR CONVERTING FILMS

The new eXTRASLIT slitter rewinder works fully electrical, without any hydraulic functions. This high-tech product is designed for a working width of up to 3800 mm. It allows narrow cuts from 180 mm and the conversion of material thicknesses between 2 and 400  $\mu\text{m}$ . The speed of 1200 m/min ensures the highly productive,

economic production of finished rolls weighing up to 5000 kg. The eXTRASLIT is extremely flexible and guarantees highest efficiency and rewind quality. You can configure your slitter rewinder to your requirements thanks to the modular machine concept with its wide range of technical features.



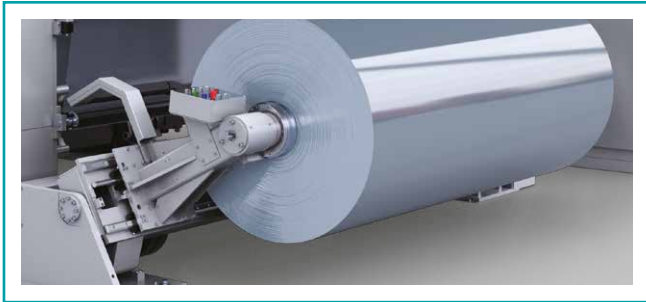
### Technical data

» Working width up to:	3800 mm // 150"
» Unwind diameter up to:	1300 mm // 50" (or larger on customer's request)
» Rewind diameter up to:	1300 mm // 50"
» Speed up to:	1200 m/min // 4000 ft/min
» Material thickness	2 $\mu\text{m}$ – 400 $\mu\text{m}$



### MAXIMUM FLEXIBILITY, QUALITY AND EFFICIENCY IN A HIGHLY COMPACT DESIGN

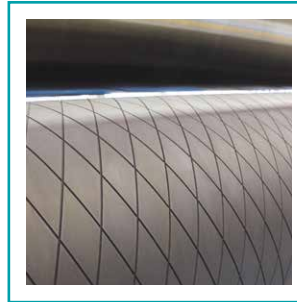
- » Fully electrical machine concept
- » Conversion of films and flexible packaging materials
- » Innovative clean and integrated machine design
- » Optimum accessibility and small footprint
- » Optimized separation of unwinding and rewinding tension through a wrap-around angle of more than 450°
- » Modular configuration with different automation levels
- » Digital AC drive technology with highly efficient energy recovery
- » Latest Profinet control concept
- » Optimum operability from the central control console
- » Low-maintenance and ergonomic machine concept



**1** Stock reel can be picked up from the floor (optional steel core operation)



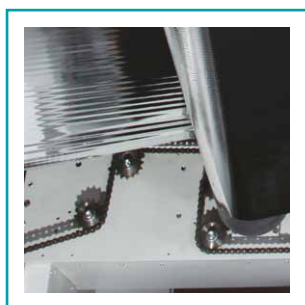
**2** Unwind and rewind traverse movement is initiated by an electric drive concept



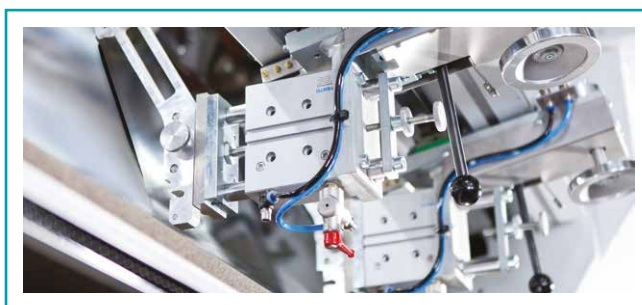
**3** Driven guide rollers with different coatings available (optional individually direct driven rollers)



**6** S-roller group with high wrap-around angle for optimal web tension separation



**7** Single or dual-sided web threading



**8** Manual, semi-automatic or fully-automatic knife positioning Razor blade (wrap around in-groove/in-air) or Burst Cut



**4**  
Optional driven dancer roller for constant web tension



**5**  
Industry 4.0 and operator friendly panel



**9**  
Easy and fast exchangeable contact rollers, no tools needed



**10**  
2000 kg, 3300 kg and 5000 kg rewind stations available with manual or fully-automatic positioning

**GOEBEL**  **IMS**

[www.goebel-ims.com](http://www.goebel-ims.com)

Slitter rewinders, automatic un-and winders and inspection machines for the **primary** and **converting** industries, able to process **film, paper** and board, **aseptic packaging, alufoil** and **nonwoven**

**LAEM**  **IMS**

[www.laem-ims.com](http://www.laem-ims.com)

Slitter rewinders (Compact, Twin-shaft, Station and Turret) and high automation machinery for **flexible packaging**, film, paper and coated materials

**ROTOMAC**

[www.rotomac.it](http://www.rotomac.it)

Rewinding, embossing and **packaging** machinery for food wrapping in aluminium foil, film and baking paper

**DELTAMOULD**

[www.deltamould.it](http://www.deltamould.it)

Low pressure, gravity and die-casting **moulds** for aluminium alloy components

 **deltamatic**

[www.deltamatic.com](http://www.deltamatic.com)

Customized thermoforming lines for **automotive** interior trims

 **KASPER**

[www.imstechnologies.com/kasper](http://www.imstechnologies.com/kasper)

Turning & boring solutions and precision dimensional control systems for **automotive** metal components

**Italy**

**IMS TECHNOLOGIES S.p.A.**

**Headquarters & Operations 1**

Via Cav. Beretta, 25  
24050 Calcinatè (BG)  
Tel.: +39 035 83 55 111

**Operations 2**

Via Comonte, 10  
24068 Seriate (BG)  
Tel.: +39 035 4376373

**Operations 3**

Via G. Brodolini, 42/44  
15033 Casale Monferrato (AL)  
Tel.: +39 0142 45 57 19

**Germany**

**GOEBEL Schneid- und Wickelsysteme GmbH**

Europaplatz, 4  
D-64293 Darmstadt  
Tel.: +49 6151 888 1

**USA**

**IMS TECHNOLOGIES Inc.**

5 Commerce Way, Unit 150  
Hamilton, NJ 08691, USA  
Tel.: +1 973 287-7569

**China**

**Beijing GOEBEL Slitting Technologies Co., Ltd**

Room 311, Building 1, Bright ChangAn BLD,  
No.7 JianGuoMenNei Street, 100005,  
Beijing/P.R.China  
Tel.: +86 10 6518 8535

[www.laem-ims.com](http://www.laem-ims.com)



You can find more information about our wide range of machinery on our website.

